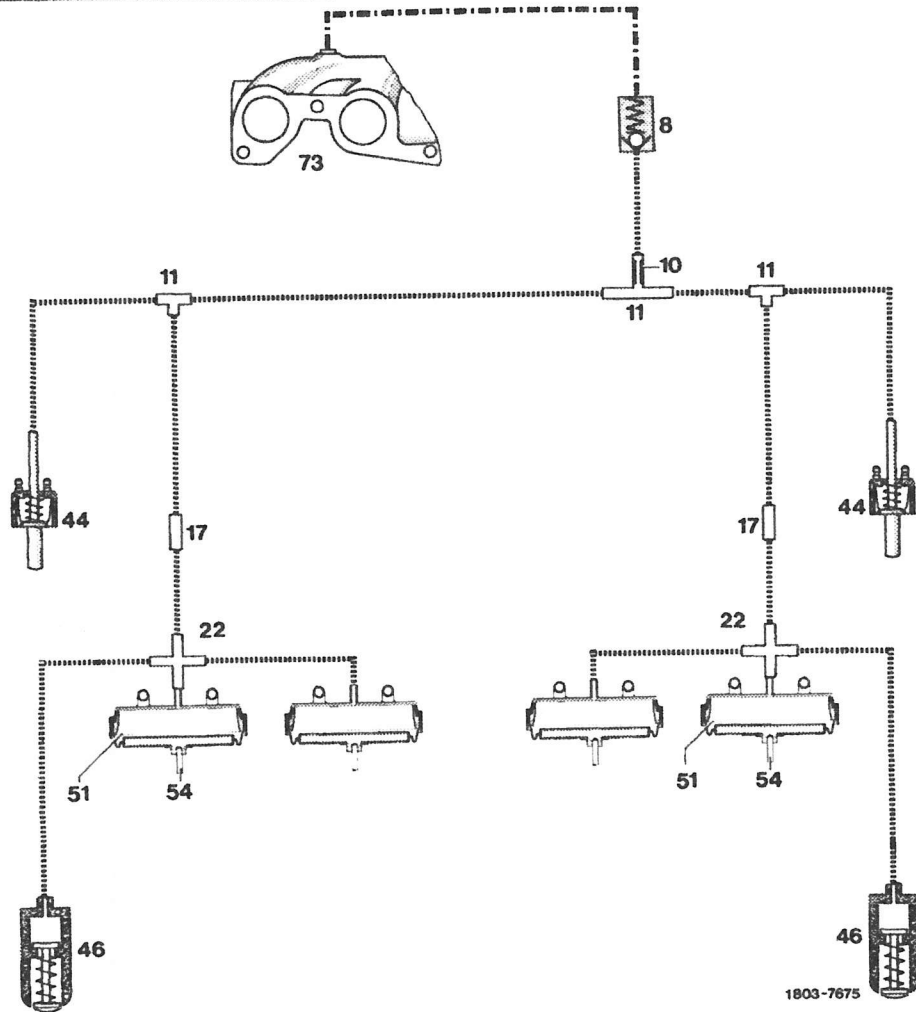


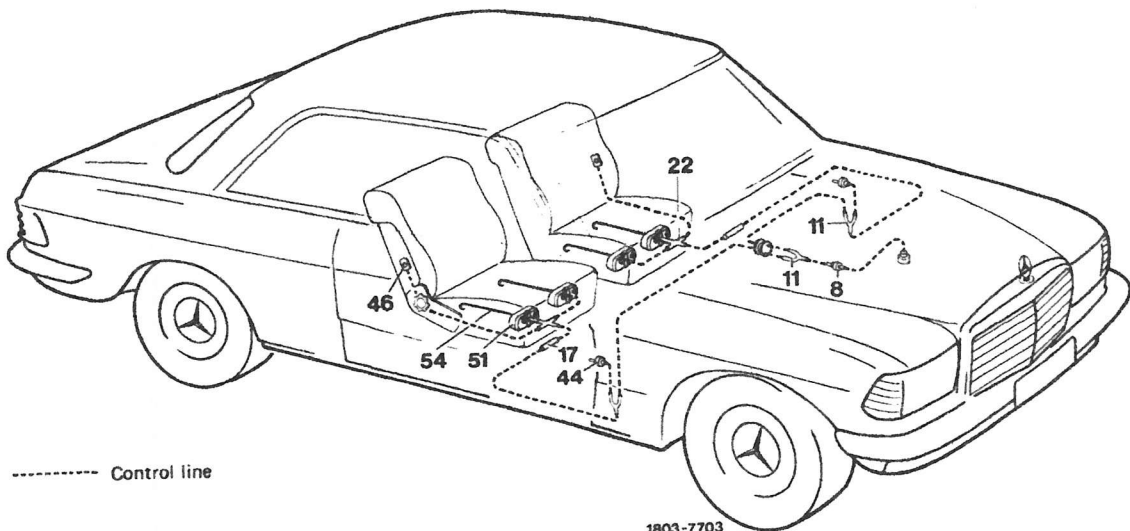
91-162 Function schematic seat back locking system (coupe)



1803-7675

----- Suction line  
 ..... Control line

- |                       |                                       |
|-----------------------|---------------------------------------|
| 8 Check valve         | 44 Door contact vacuum switch         |
| 10 Restrictor         | 46 Vacuum switch (driver's seat back) |
| 11 Distribution piece | 51 Vacuum element (seat)              |
| 17 Connection piece   | 54 Operating rod                      |
| 22 Distribution piece | 73 Intake manifold                    |

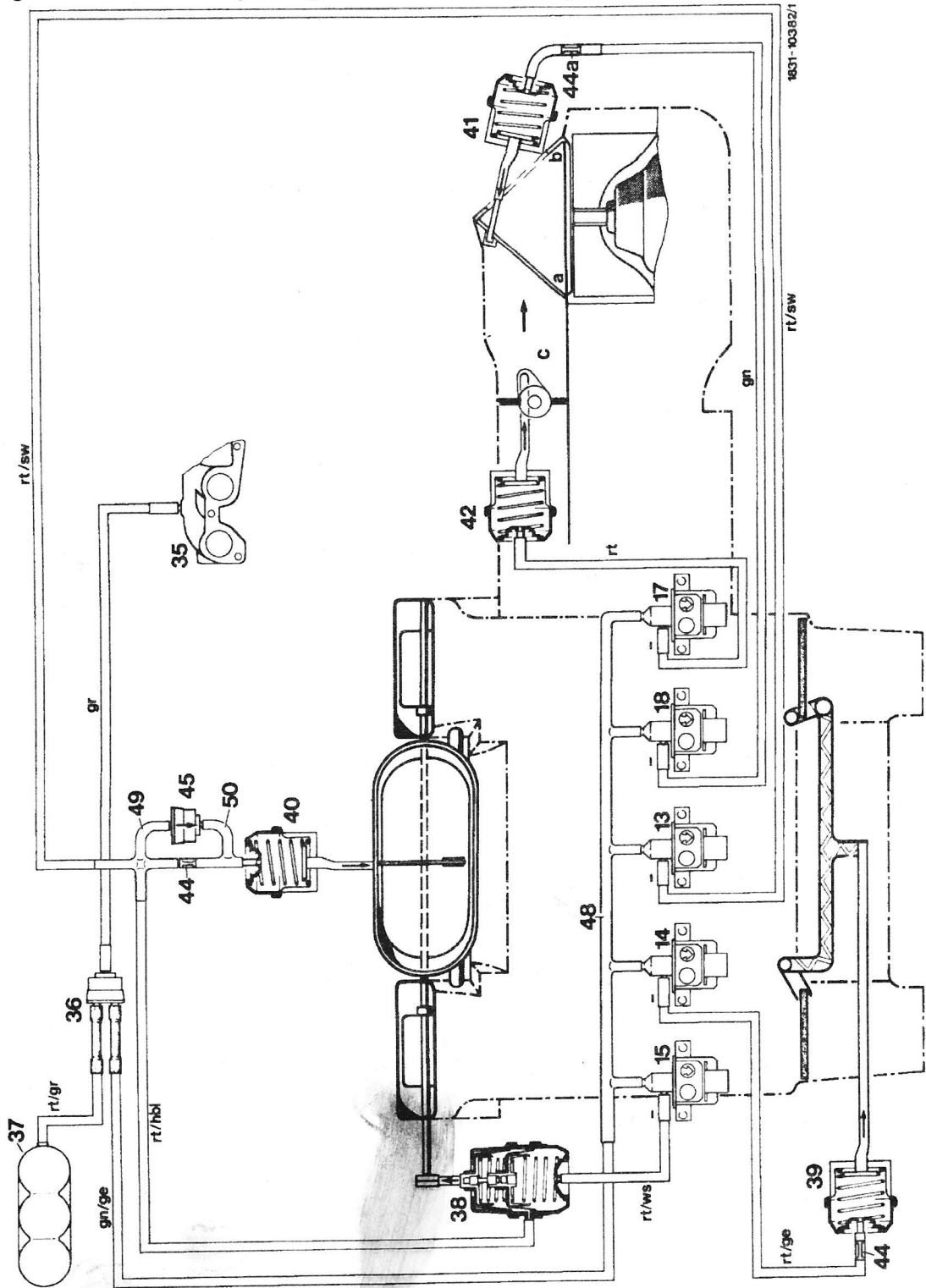


----- Control line

1803-7703

1985 Mercedes Benz 300CD (123.153) L5-3.0L DSL Turbo (617.952)

Vehicle > Heating and Air Conditioning > Diagrams > Vacuum and Vapor Hose



## 1985 Mercedes Benz 300CD (123.153) L5-3.0L DSL Turbo (617.952)

### LEGEND

- 13 = Switchover valve for center nozzle flap
- 14 = Switchover valve for legroom flaps
- 15 = Switchover valve for defroster nozzle flaps
- 17 = Switchover valve for main air flap
- 18 = Switchover valve for fresh air/recirculating air flap
- 35 = Vacuum connection to vacuum line from vacuum pump
- 36 = Check valve
- 37 = Vacuum reservoir (not used on 123.1)
- 38 = 2-stage vacuum element for defroster nozzle flaps (flaps "open")
- 39 = Vacuum element for legroom flaps (flap "closed")
- 40 = Vacuum element for center nozzle flap (flap "closed")
- 41 = Vacuum element for fresh air/recirculating air flap (position "recirculated air")
- 42 = Vacuum element for main air flap (flap "closed")
- 44 = Throttle (orifice)
- 45 = Check valve (arrow = flow direction)
- 48 = 6-point distributor
- 49 = 4-point distributor
- 50 = 3-point distributor

### Color Code

- ge = Yellow
- gn = Green
- gr = Gray
- rt = Red
- ws = White
- hbl = Light blue
- sw = Black

Community Create Quote

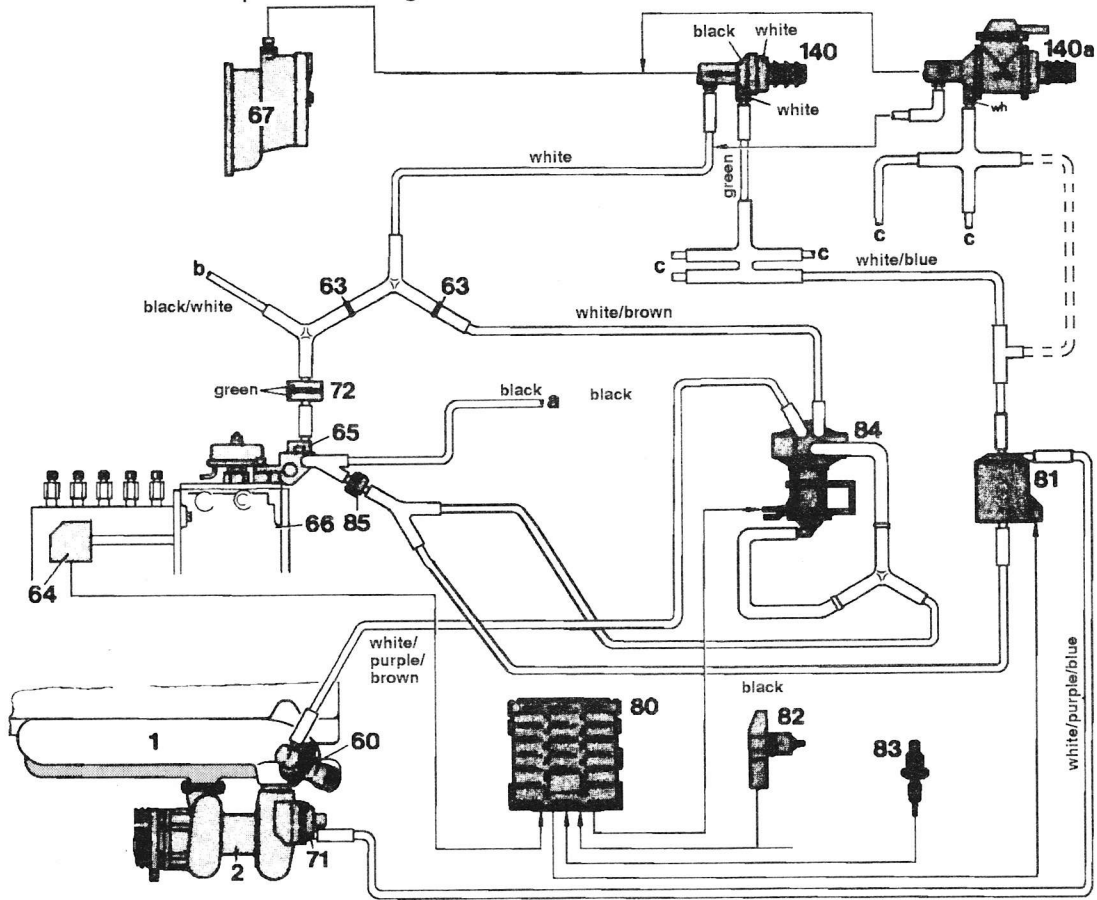
- Component Tests and General Diagnostics
- Flow of Diagnosis
- Initial Inspection and Diagnostic Overview
- Symptom Related Diagnostic Procedures

**Tools and Equipment**

- Electrical / Mechanical Repair

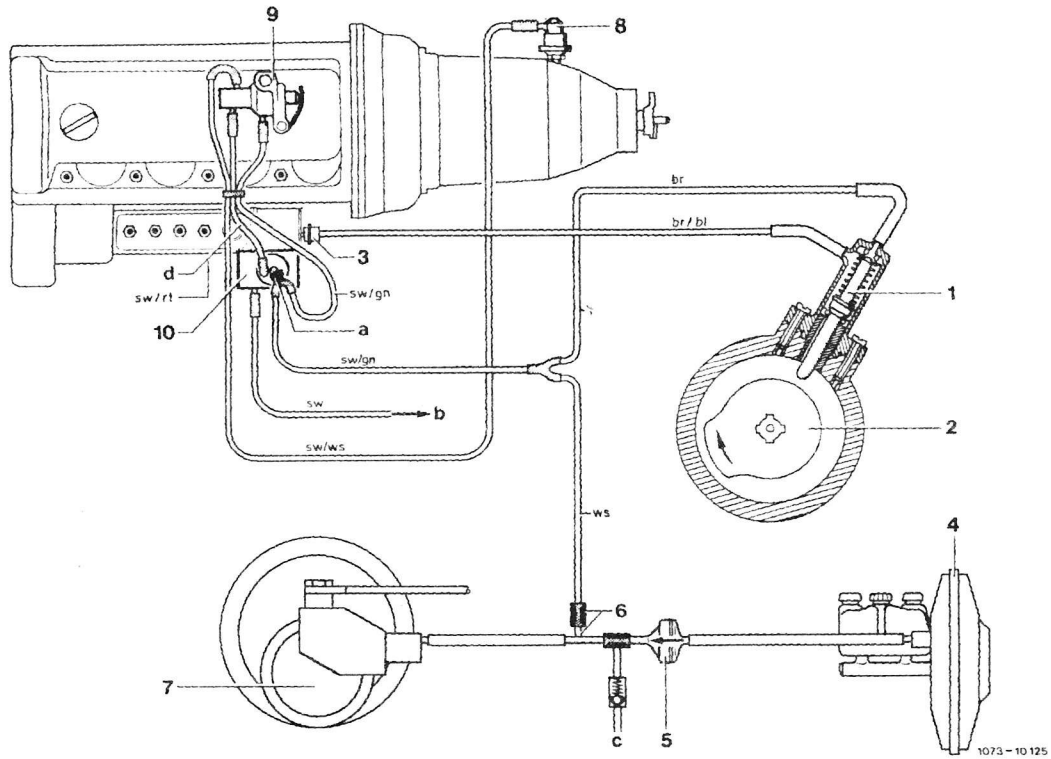
1985 Mercedes Benz 300CD (123.153) L5-3.0L DSL Turbo (617.952)

Vehicle > Powertrain Management > Emission Control Systems > Exhaust Gas Recirculation > Diagrams > Vacuum and Vapor Hose and Vapor Hose > Vacuum and Vapor Hose Diagrams

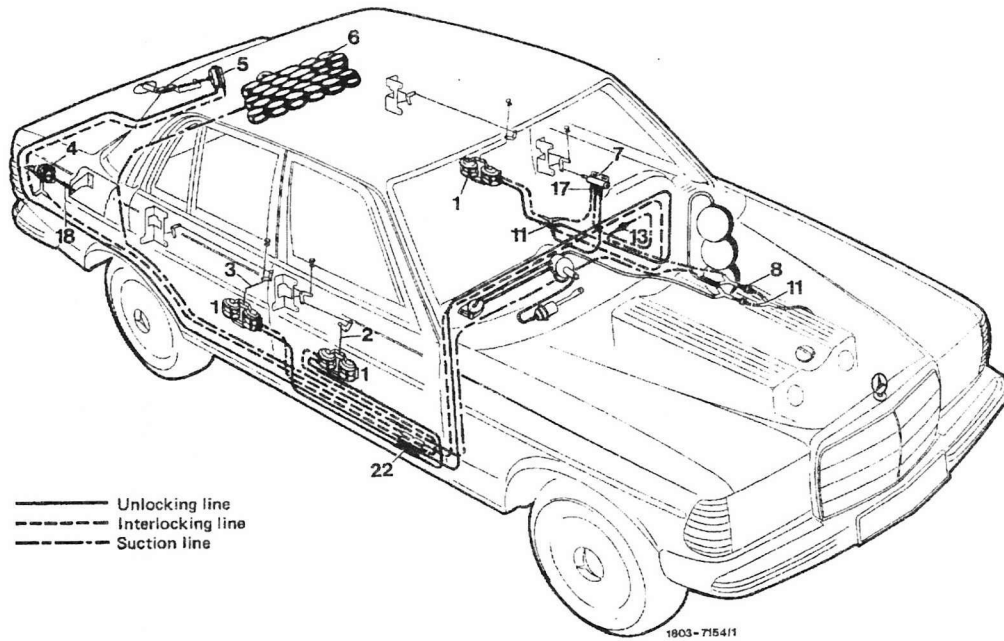


- 1 Intake manifold
- 2 Exhaust gas turbocharger
- 60 EGR valve
- 63 Throttle (orifice) 0.5 mm
- 64 Fuel rack position sensor
- 65 Vacuum control valve
- 66 Injection pump
- 67 Vacuum pump
- 71 Air recirculating valve
- 72 Vacuum damper
- 80 Control unit
- 81 Switchover valve
- 82 Rpm sensor
- 83 Coolant temperature sensor
- 84 Vacuum converter
- 85 Vent filter
- 140 Check valve, model 123
- 140a Check valve, model 126

- a Positive vent line to passenger compartment
- b To automatic transmission
- c Remaining consumers



- |                       |                                    |                |                     |
|-----------------------|------------------------------------|----------------|---------------------|
| 1 Valve               | 6 T-piece with integrated throttle | a Suction line | br = brown          |
| 2 Cam plate           | 7 Vacuum pump                      | b Vent line    | br/bl = brown/blue  |
| 3 Vacuum control unit | 8 Vacuum control unit transmission | c Central lock | sw/rt = black/red   |
| 4 Brake booster       | 9 Change-over valve                | d Control line | sw/gn = black/green |
| 5 Check valve         | 10 Vacuum control valve            |                | sw = black          |
|                       |                                    |                | sw/ws = black/white |

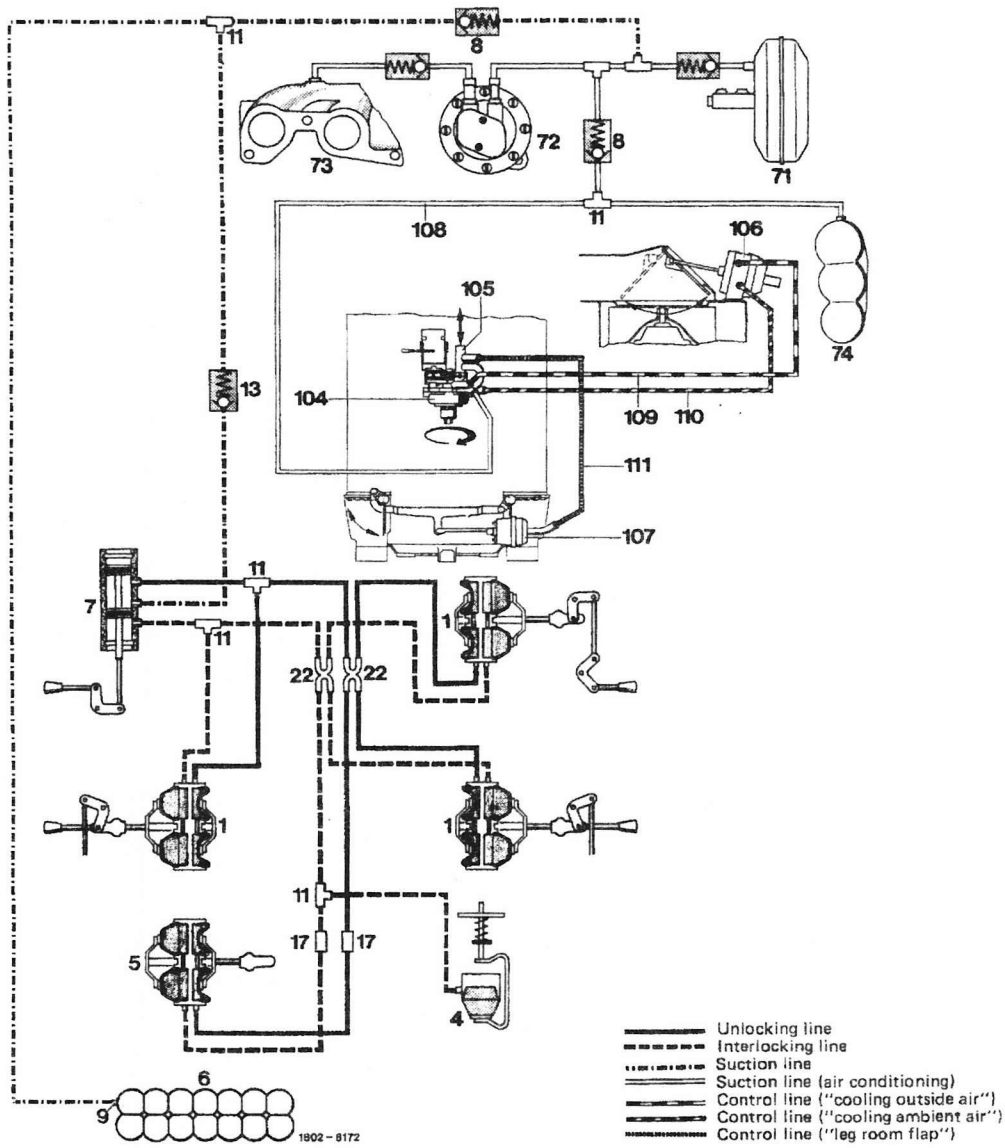


- 1 Vacuum element (driver's and rear doors)
- 2 Control rod (front passenger door)
- 3 Control rod (rear doors)
- 4 Vacuum element (flap for tank filler neck)
- 5 Vacuum element (trunk lid)
- 6 Vacuum supply tank
- 7 Vacuum switch
- 8 Check valve

- 11 Three-way distributor
- 13 Check valve
- 17 Connection
- 18 Compression spring
- 22 Four-way distributor

1985 Mercedes Benz 300CD (123.153) L5-3.0L DSL Turbo (617.952)

Vehicle > Body and Frame > Locks > Diagrams > Vacuum and Vapor Hose > Functional Diagram



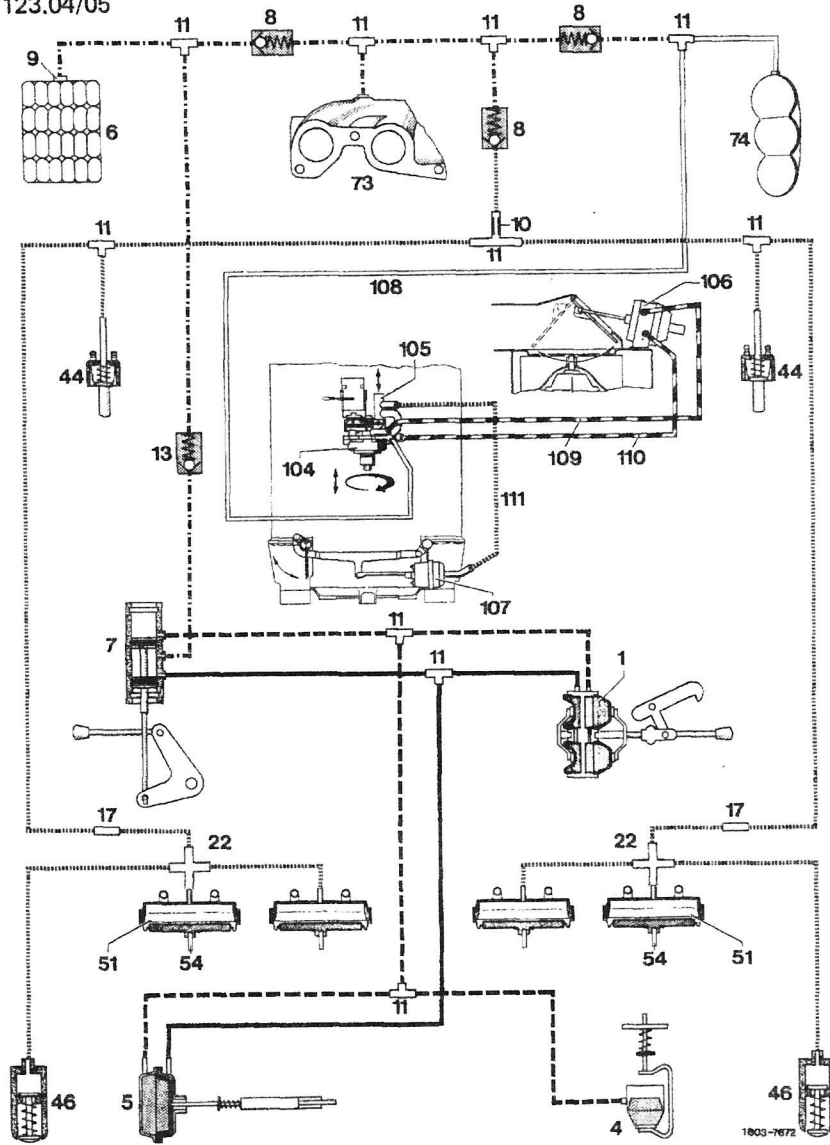
- 1 Vacuum element (driver's and rear doors)
- 4 Vacuum element (flap for tank filler neck)
- 5 Vacuum element (rear door)
- 6 Vacuum reservoir
- 7 Vacuum switch
- 8 Check valve
- 9 Sealing
- 11 Three-way distributor
- 13 Check valve
- 17 Connection
- 22 Four-way distributor
- 71 Brake unit

- 72 Vacuum pump
- 73 Intake pipe
- 74 Vacuum reservoir (air conditioning system)
- 104 Vacuum rotary switch for ambient air flap
- 115 Vacuum pull switch for leg room flap
- 106 Vacuum element for ambient air flap
- 107 Vacuum element for leg room flap
- 108 Suction line (air conditioning)
- 109 Control line ("cooling outside air")
- 110 Control line ("cooling ambient air")
- 111 Control line ("leg room flap")

1985 Mercedes Benz 300CD (123.153) L5-3.0L DSL Turbo (617.952)

Vehicle > Body and Frame > Locks > Diagrams > Vacuum and Vapor Hose > Functional Diagram

Model 123.04/05



- Locking line
- - - - Unlocking line
- ..... Suction line
- ..... Control line
- ..... Suction line (air conditioning system)
- ..... Control line (cooling off)
- ..... Control line (cooling on)

- |  |  |
|--|--|
| 1 Vacuum element (front passenger's door)    | 44 Door contact vacuum switch                      |
| 4 Vacuum element (flap for tank filler neck) | 46 Vacuum switch (backrest)                        |
| 5 Vacuum element (trunk lid)                 | 51 Vacuum element (seat)                           |
| 6 Vacuum reservoir                           | 54 Actuating rod                                   |
| 7 Vacuum switch                              | 73 Suction pipe                                    |
| 8 Check valve                                | 74 Vacuum reservoir (air conditioning system)      |
| 9 Seal                                       | 104 Control line (cooling off)                     |
| 10 Choke                                     | 105 Control line (cooling on)                      |
| 11 Distributor                               | 106 Vacuum element right (air conditioning system) |
| 22 Distributor                               | 107 Vacuum element left (air conditioning system)  |

1803-7672